

DCS-10F7N

**Semi Auto Flat Shape And Brick Shape
Vacuum Packing Machine
Introduction Manual**

Application scope



Coarse Grains



Nuts, Seeds



Pet feeds, Cat litter



Chemical Granulars

Packaging application scope: It is suitable for vacuum packaging of granular materials in fields such as grain, cat litter, and pet feeds, etc.

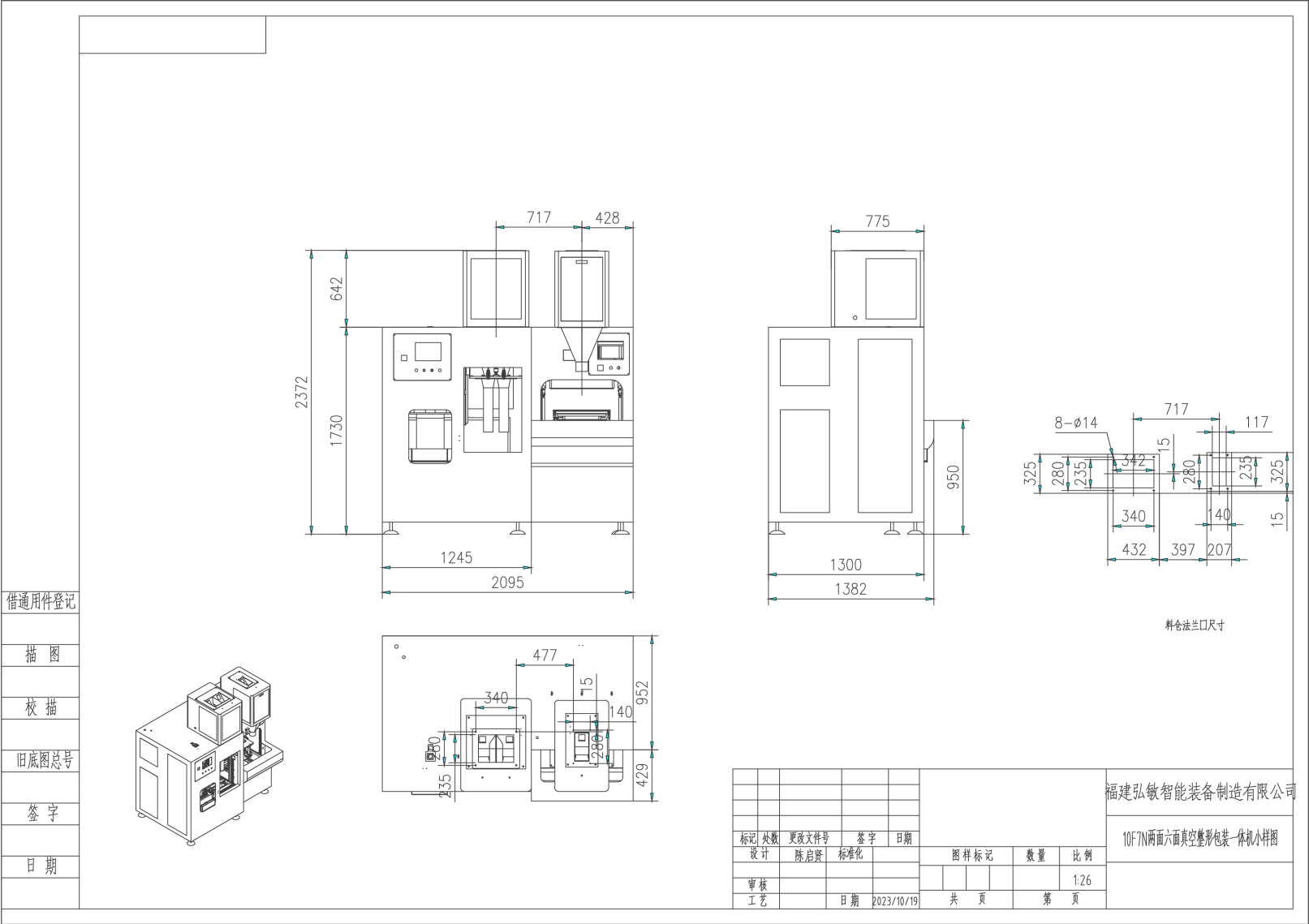
Performance characteristics

1. Equipped with a high-definition touch screen, integrating human-machine interaction.
2. The flat and brick shape can run at the same time or individually, with dual touch screens for more flexible and convenient use.
3. For small-specification (within 1.25kg) brick packaging, allowing for two packages to be produced at once, offering faster speed and higher efficiency.

Performance characteristics

4. Utilizes a fully touch-screen interface and internationally renowned electrical components, with all circuit cables of the entire equipment housed in corrugated tubing, and an electrical control box rated IP44 for enhanced equipment safety.
5. Incorporates high-precision vibration control technology, ensuring faster operation and higher accuracy.

Equipment sample drawing



Equipment parameters

Name	Equipment parameters	
Packing Range	The flat shape: 2.5-10KG The brick shape: 0.3-5KG	
Packing Capacity	The flat shape	260bags/hour
	The brick shape	For 0.3-1.25KG, the speed is approximately 400-500 bags/hour.
		For 1.25-5KG, the speed is approximately 280 bags/hour.
Packing Accuracy	±2g	
Division Value	1g	
Power Supply	AC380V, Three-phase-five-wire system,5KW	
Air Consumption	0.6Mpa,0.36m ³ /MIN	
Measuring method	High precision electronic quantitative scale	
Working Temperature	0-40°C	
Equipment Dimensions(LxWxH)	2095 *1382*2372 mm	

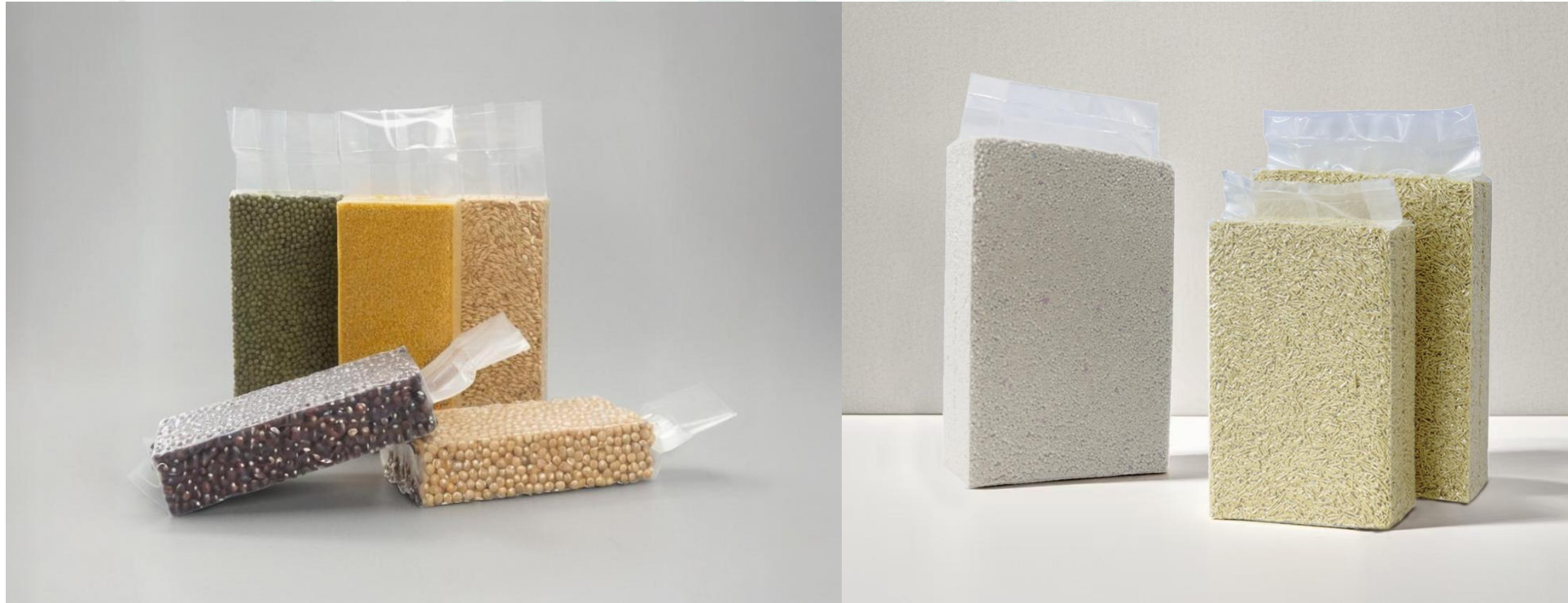
Finished product rendering

The flat shape



Finished product rendering

The brick shape



Color diagram of the equipment (subject to the actual product)



Configuration list

Number	Name	Brand
1	Relays	Schneider (France)
2	Contactors	Schneider (France)
3	Air circuit breaker	Schneider (France)
4	Temperature controller	Fuji (Japan)
5	Cylinder	AIRTAC (Taiwan)
6	Solenoid Valve	Mindman (Taiwan)
7	Vacuum pump	ZD (Shanghai)
8	Terminals	Phoenix Contact (Germany)
9	Solid State Relay	Omron (Japan),Kudom (UK)
10	Button	Schneider (France)
11	Slide rail and slider	TBI (Taiwan)
12	Photoelectric Switch	Omron (Japan)/Autonics (South Korea)
13	Load Cell	Keli(China)